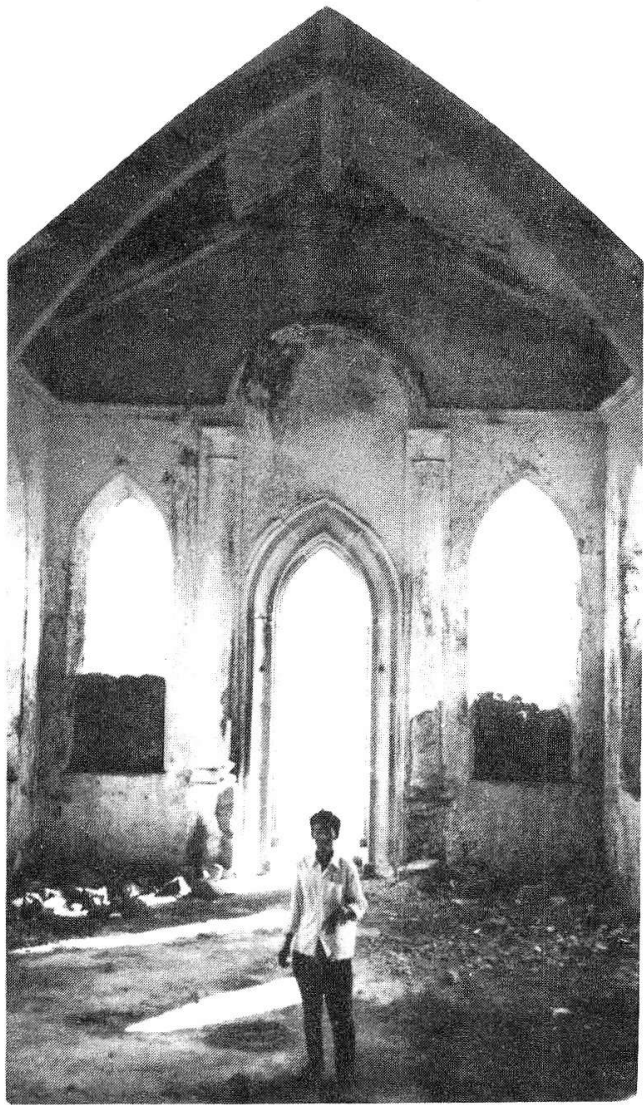


沙勿略堂
聖方濟各
上川島



聖堂正門向西北，面對中國大陸。

The front of the Chapel facing
northwest

由祭台望聖堂內景。

Interior view

上川島聖方濟各沙勿略堂是聖人病逝的地方。中國政府現有意將聖堂重新修葺以便開放。

Shang Chuan Island:

Chapel of St. Francis Xavier



The southwest side of the Chapel

聖堂西南側。

Shang Chuan Island has a special place in the history of Christianity in Asia, for it is here that St. Francis Xavier, one the greatest of modern Jesuit missionaries, died while looking northwest to the China mainland where he had sorely wished to bring the Gospel. The Chinese government is now in the process of preparing St. Francis Xavier Chapel here for re-opening in the near future.