

Museum of Natural History

博物館

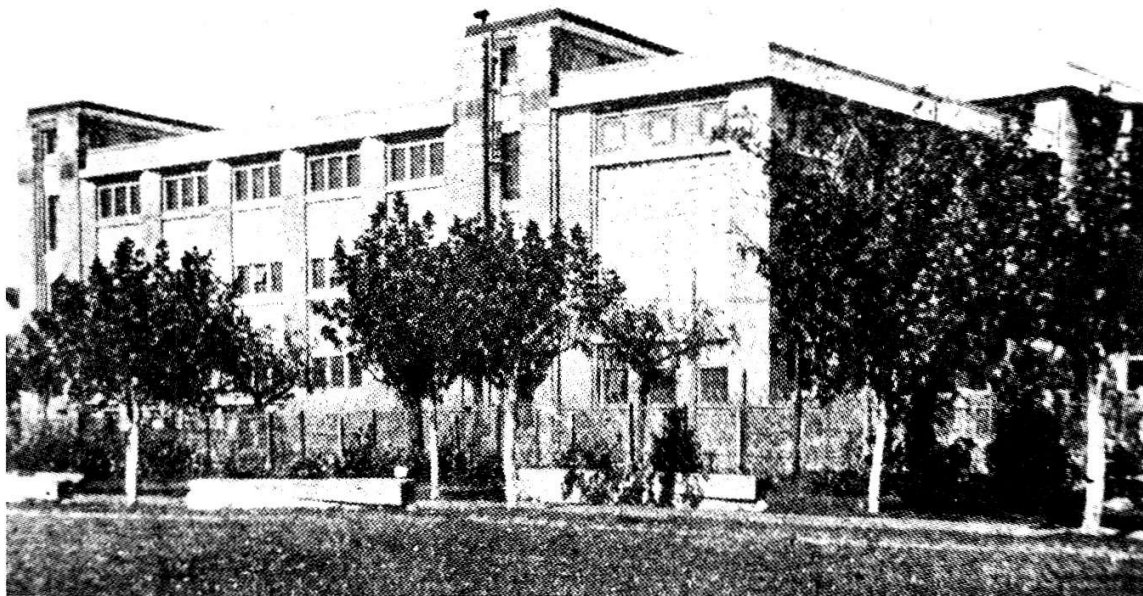
The original Museum of Natural History was first located near the magnetism department of the Observatory and placed under the direction of Pierre Heude (1836-1902). The museum issued valuable materials on Chinese history as well as a series of monographs on the provinces, on property, examinations, and the Grand Canal. It also issued dictionaries or guides to the Chinese language. In 1930 a new museum was constructed in the northern section of the Zhen Dan University campus. The former quarters were taken over by a Catholic magazine. These same quarters later became the residence for the priests of the parish.

原來的博物館座落於天文台的磁氣學部附近，由韓伯祿神父主理。博物館曾出版多項有關中國歷史的珍貴資料，並刊行一系列關於各省份、物種、科舉以至大運河的單行本。博物館亦出版了中國語文的辭書及指南。一九三零年，新博物館在震旦大學校園的北端落成。原有院址改由聖教雜誌社使用，後來又改作堂區神父的住所。

老博物館全景

A full view of the old museum.





一九三零年建造的新博物館
A new museum built in 1930.



今日博物館已改建為上海土山灣工藝品廠

Today, the Museum has been replaced with Shanghai's T'ou-se-we Handicraft Factory.