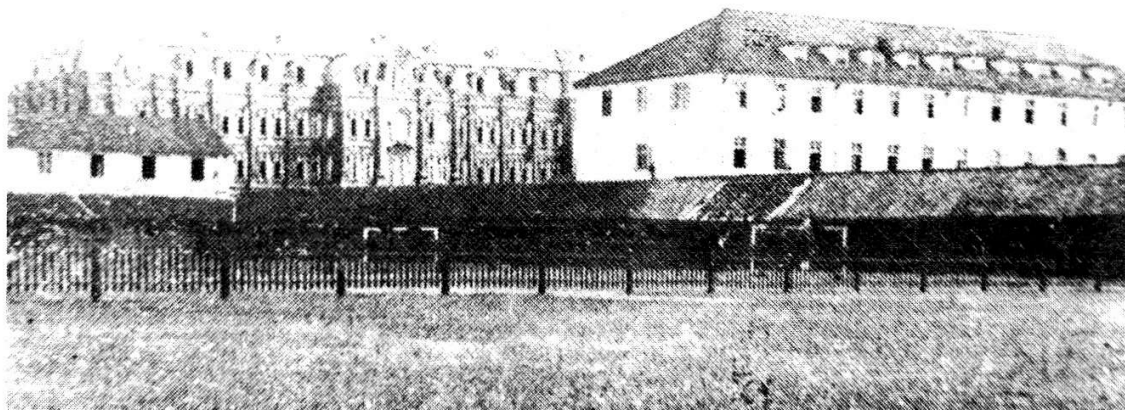


The Jesuits In Education 耶穌會的教育事業

St. Ignatius College

徐匯中學



St. Ignatius College, first built in 1850, was one of many secondary schools run by the Jesuits. In 1878 a Western style school and dormitory were built and the school was further expanded in 1918. By 1940, it had a student body of 2,000 of whom 1,100 were non-Christians. Its most famous graduate was Ma Xiangbo.

徐匯中學始建於一八五零年，是耶穌會所辦的眾多中學之一。一八七八年，增建了西式的校舍，一九一八年又加建一樓。到一九四零年，該校有學生二千人，其中一千一百名並不是基督徒。該校最著名的畢業生是馬相伯先生。

學校大門

The main gate of the school.





St. Ignatius College

徐匯中學原貌。

下圖：新校門設於新鎮路上。

Below: The gate to the new school is located on Xin Zhen Road.





匯師中小學
*Xujiahui's
Normal School*

The Normal School had both elementary and secondary departments.



老師們攝於學校大門前。
Future teachers pose in front of the school's main gate.

徐匯區第二中心小學校
舍建於原中學部的舊址
上。

No. 2 Central Elementary has been erected on the original location of the Jesuit school.

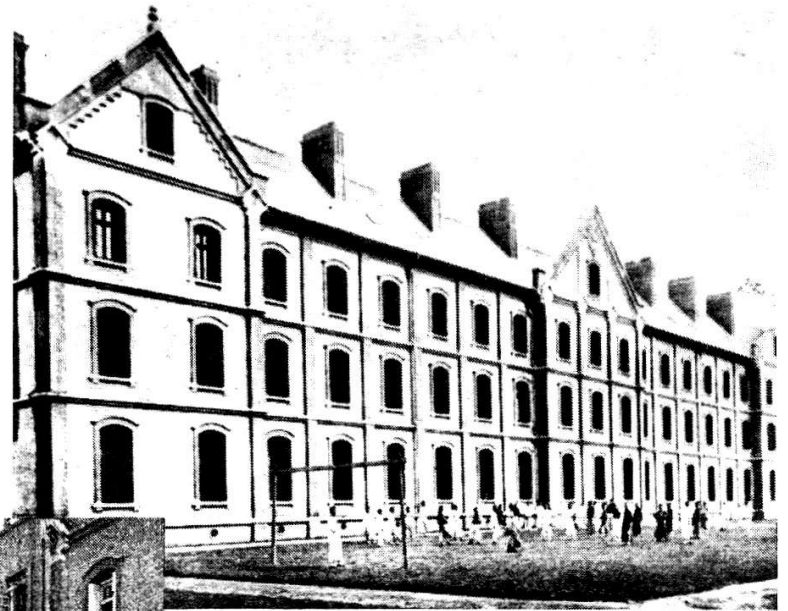


耶穌會修道院

The Jesuit Scholasticate

一九零九年建造的三層
磚木結構老建築。

The old three-storey
building in 1909.



耶穌會神學院

The Jesuit Theologate

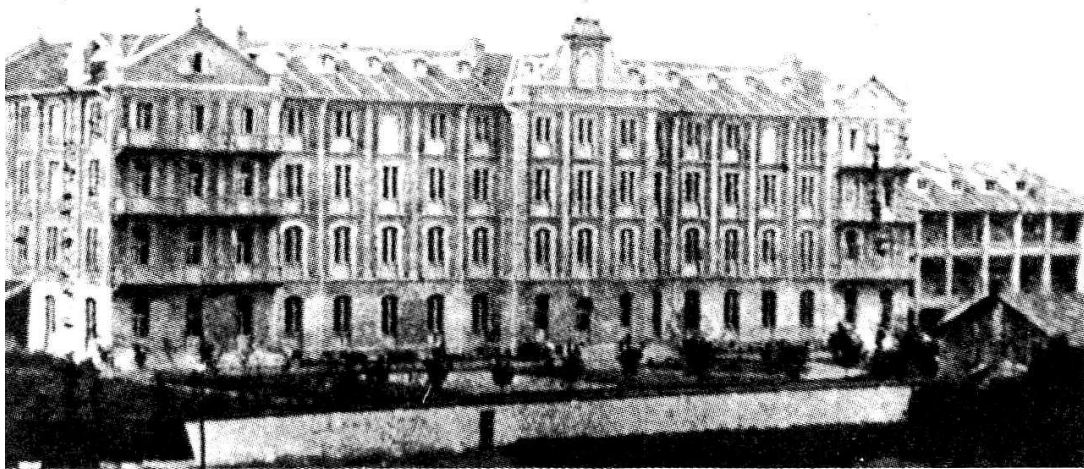
一九三六年所建的四層
鋼筋混凝土建築。

The four-storey building
in 1936.

Today the **Eastern Commercial Building** and the **Shanghai Industrial Centre** are being constructed on the original site.

今日在原址上建築中的東方商廈和上海實業中心大廈。





大修院
Major Seminary

After the Jesuits returned to Jiangnan in the last century, they successively set up a seminary at Zhangpuqiao, Hengtang, Zhangjialou and Dongjiadu. Finally, in 1878, they moved the seminary to Xujiahui. The major seminary was completed in 1929. A new seminary, established in the 1980s, is located at Sheshan.

耶穌會傳教士自上世紀重返江南後，在張樸橋、橫塘、張家樓、董家渡等處辦起了修道院。最後在一八七八年遷往徐家匯。這是在一九二九年建造的大修院全景，八十年代在佘山建做了新的修道院。

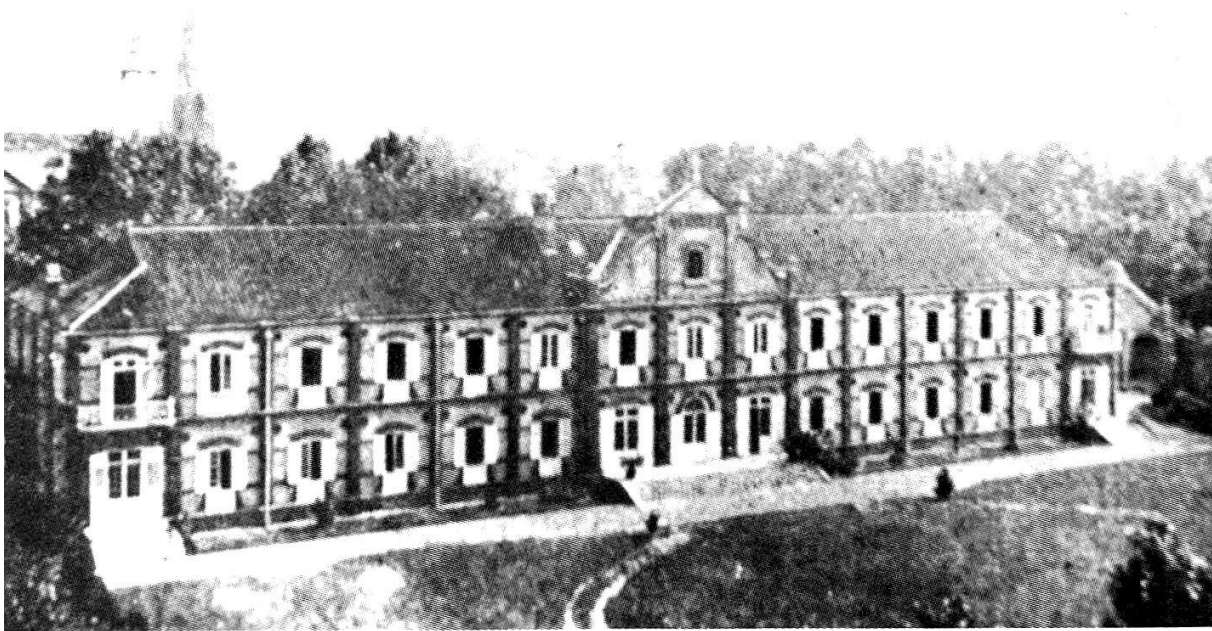
Today, the major seminary has become the office building of the Xujiahui People's Government. Below: The main gate to the office building.

今日大修院已被改建為徐匯區人民政府辦公大樓。下圖為辦公大樓的大門。



環境監測中心取代了小修院

Environmental Monitoring Centre Replaces Minor Seminary



一九一九年建成的小修院全景。

An overall view of the Minor Seminary, which was built in 1919.

新建的環境監測中心大樓。

The newly constructed Environmental Monitoring Centre.

