

# 拯亡會的工作

## *The Helpers in Xujiahui*

In 1867 the Helpers of the Holy Souls were invited to Xujiahui where they undertook a variety of works. In the area the Sisters operated an orphanage for girls, dispensaries, a school for deaf-mute children, a catechumenate, workshops and several schools. They founded the Xujiahui Girls Boarding School which was the first middle school for girls established in Shanghai and in 1904 they opened Morning Star School for non-Christian girls.

In addition the Sisters established a house of religious formation for a local community, the Presentandine Sisters, whose aim was to help missionaries with their work in catechumenates, schools and dispensaries. Besides the main building and the chapel constructed in 1869, the compound eventually comprised 12 other buildings.

In another area of Xujiahui, near the Carmelite convent, the Sisters maintained a novitiate for the novices of their own community.

一八六七年，拯亡會應邀到徐家匯主持了一系列的服務。一八六九年，該會在聖母樓開設一所孤兒院。其後，並開辦診所及上海市首間女子中學徐家匯女子寄宿學校；一九零四年，該會又為非基督徒女童開辦啓明女校以及一所聾童學校。

該會又為當地的修女團體獻堂會設立了一座修院。獻堂會的主要目標是協助傳教士分擔要理講授、學校及診所的工作。除了一八六九年興建的修會主樓及小堂外，會院內共有十二座建築物。

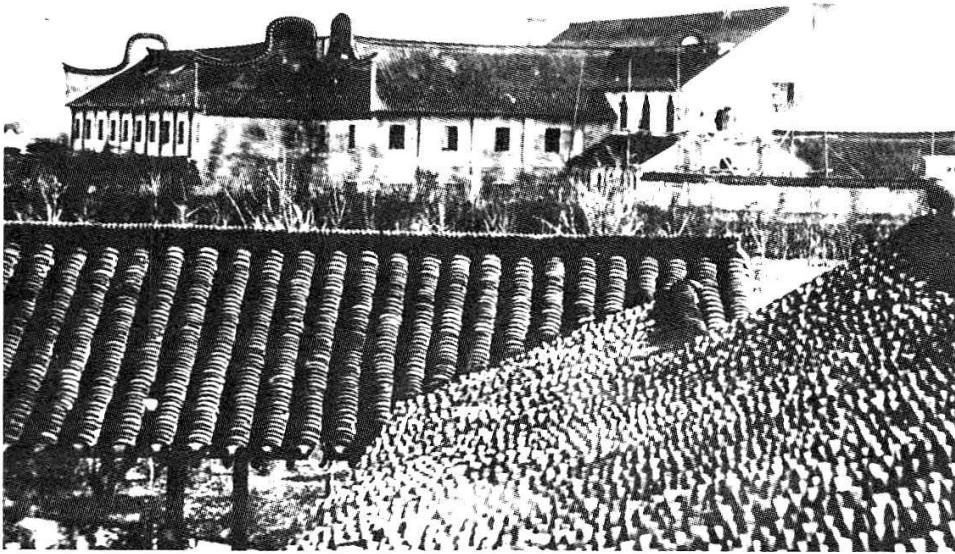
在徐家匯的其他地區，拯亡會也設有自己的初學院，以培養本身的初學生。

*Our Lady's Convent*

## 聖母院

Our Lady's Convent, built in 1855, was originally located at Huangtang. In 1864 it was relocated to the Wang Family Church and later, east of Wangjintang at Xujiahui.

聖母院創建於一八五五年，初期院址位於橫塘。一八六四年遷至王家堂，後再遷來徐家匯肇嘉濱東側。

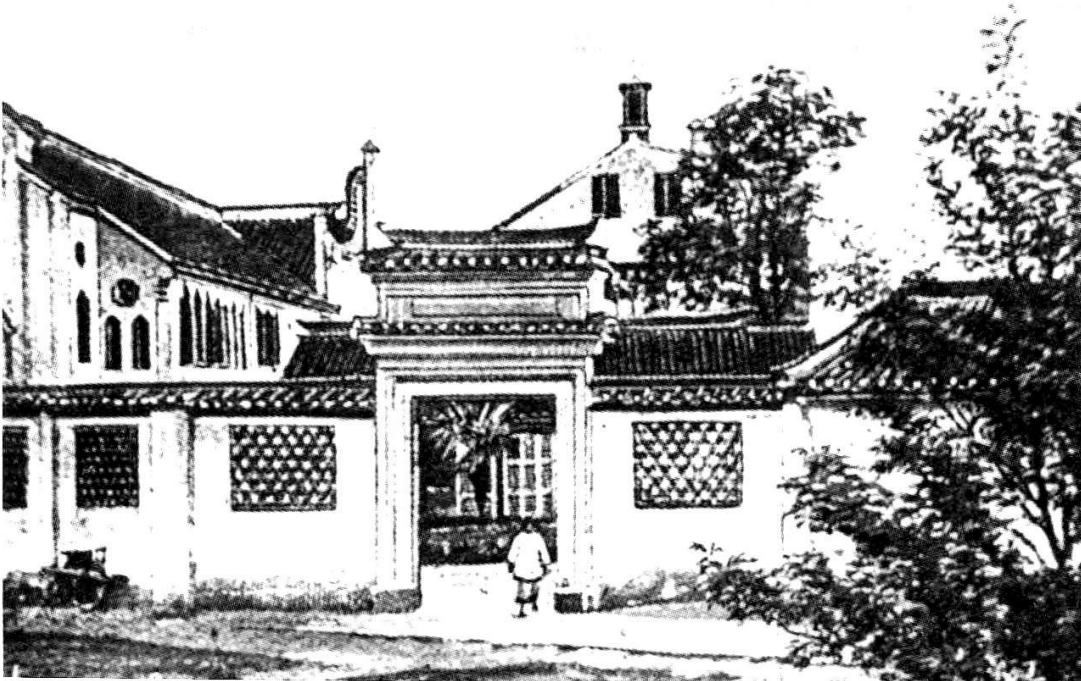


一九零零年的聖母院橋。

The bridge leading to Our Lady's Convent as it appeared in 1900.

大門及部份工場。

The main entrance and part of the convent grounds.





Chinese women have long been known for their beautiful embroidery. The group from Xujiahui won a prize for their work at the World's Fair in Paris in 1900.

The orphan girls' embroidery workshop was located above Our Lady's Convent chapel.

Today, Our Lady's Convent has become the quarters for the Shanghai Textile Factory (Right) and the Shanghai Municipal School for Housing Bureau cadres (Below).

中國婦女早以精美的刺繡藝術而名聞遐邇，徐家匯的婦女更於一九零零年在巴黎舉行的世界博覽會中贏取獎項。該繡花工場座落於聖母院小堂內。小堂所在地現時成為了（右）上海工業編織二廠及（下）上海市房產管理局幹部學校。



*The Presentandine Sisters*

## 獻堂會修女



修女們正在給聾啞班的孩子們上課。

The Sisters in front of their convent teaching deaf-mute children.

The convent of the Presentandine Sisters is today the home of the Shanghai Xujiahui Labour Union Workers' Club. The Sisters' chapel has been converted into the Yulan Dining Hall and the dormitory into the Guanglan restaurant.

獻堂會修女院現已改建為上海市總工會徐匯區工人俱樂部，小堂則改為玉蘭餐廳，而宿舍改為廣蘭酒家。

Labour Union Workers' Club



廣蘭酒家

Guanglan Restaurant

*St. Joseph's Convent,  
the Helpers' Novitiate*

According to tradition an old matriarch of the Song family (maiden name, Shen) distributed a part of her property to her children. She retained 1.3 hectares of land for herself to support her in her old age. After her death the land was given to the Church. The Church used part of the land to build St. Joseph's Convent but the land in front of the convent remained vacant.

In the autumn of 1937, after Japanese troops invaded Shanghai, refugees crowded into Xujiahui Church, and schools. Many Catholics opened their homes to these refugees. They also organized 23 refugee centers and built temporary housing and a school on the vacant lot. Moreover, they provided the refugees with food, clothing and medical supplies. These temporary structures were torn down only in the 1950s and replaced with a three storey apartment house.

Today, the former St. Joseph's Convent is occupied by the Shanghai Industrial Vacuum Cleaner Factory (Lower right) and the Xujiahui District School of Health and Hygiene (Lower left).

拯亡會初學院  
聖若瑟院

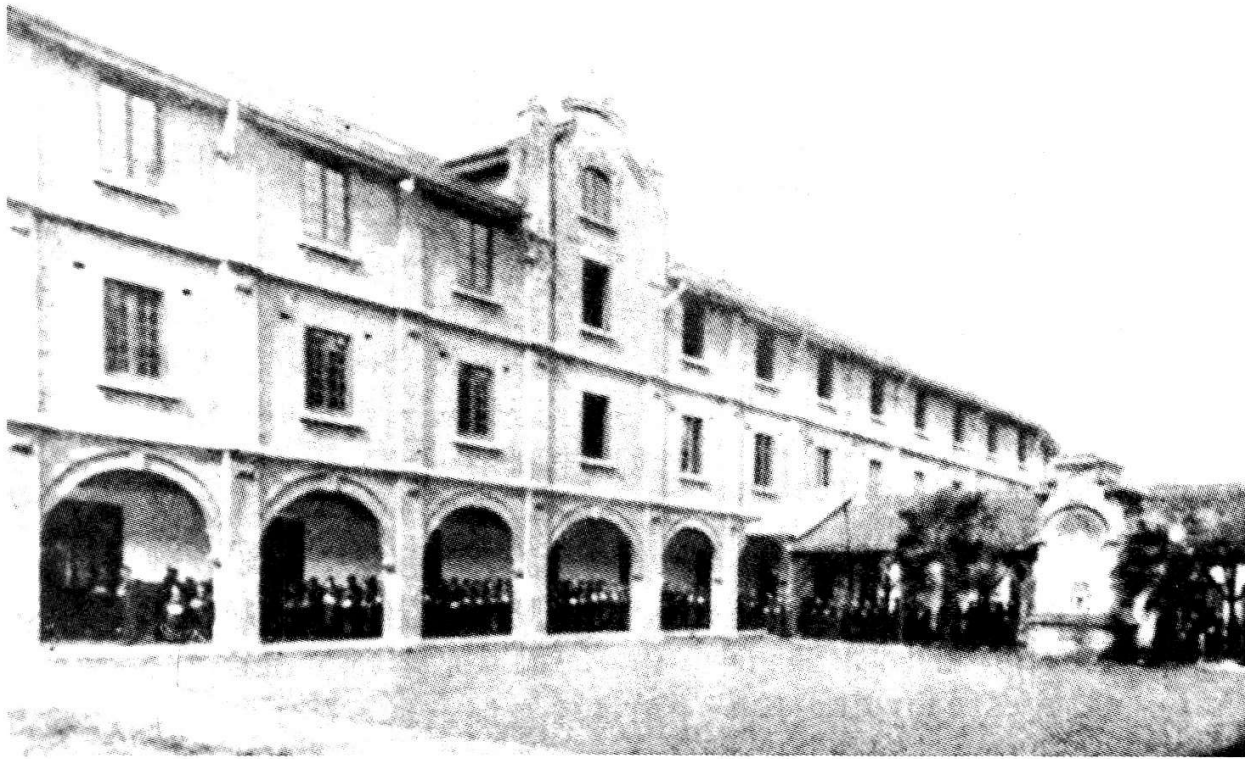
若瑟院的創建有段小掌故：宋家老太（母家姓沈）將全部家產分配給子女後，獨留下這塊佔地二十畝的土地沒有分，預先留下遺囑：在她有生之年作為養老費用，去世後則獻給教會。教會接受後，在此辦起了這座若瑟院，其院前有塊土地尚未利用，一直空置著。一九三七年秋末，日軍侵入滬郊後，大批難民湧入徐家匯，教會立即騰出私宅，共辦起了二十三個難民收容所，在若瑟院前這塊空地上也蓋起了臨時房屋，安置難民，供衣、供食、施藥，並辦起學校。這座用木板搭成的臨時房屋使用期最長，五十年代才被拆除，改建成有三層的居民樓。

現時若瑟院已改建為（右下）上海工業除塵設備廠及（左下）上海市徐匯區衛生學校。



*Xujiahui School for Girls*

## 徐匯女校

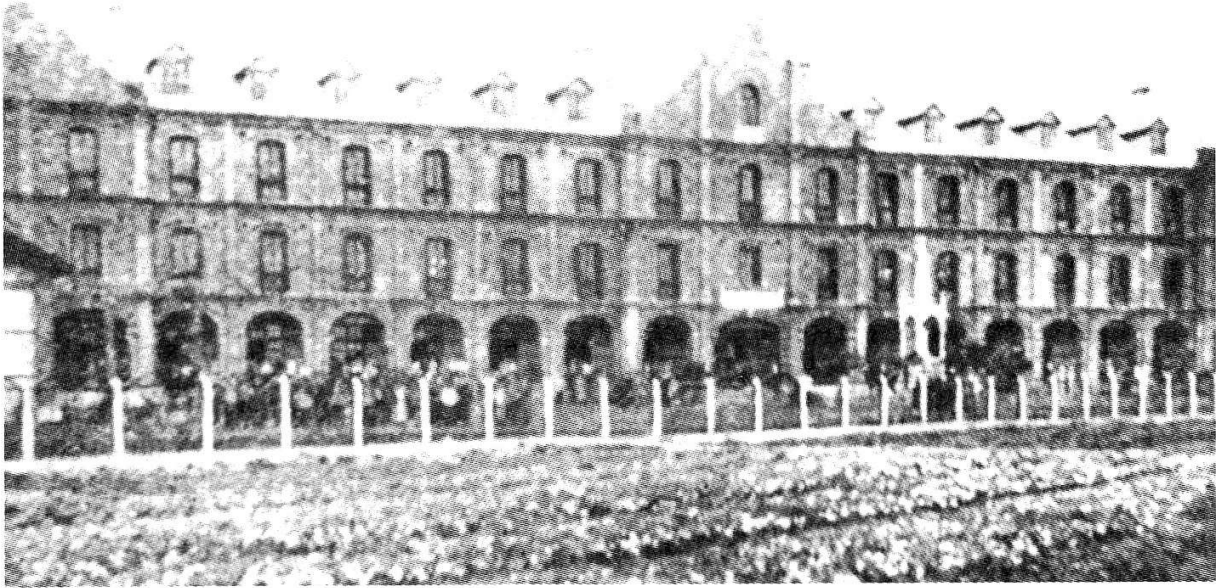


徐匯女校原名崇德女校，創建於一八六七年，是上海地區最早開設的女子中等學校，這是中學部和小學部的校舍。

*The Xujiahui Girls' School, formerly known as Chongde Girls' School, was built in 1867. This was Shanghai's first middle school for girls. Below: the main entrance of the school today.*



## 爲非基督徒女童而設的啓明女校 *Morning Star School for Non-Christian Girls*



啓明女校創建於一九零四年，是為非基督徒女童而開辦。現時女校已改建為上海市第四中學，下圖為現時該校大門。

*Morning Star School for non-Christian girls was founded in 1904. Today it is the home of the Shanghai No 4 Middle School. Below: the main entrance of the school as it looks today.*

